

Test Piles - Colne Valley Viaduct

Hillingdon Chairs – 28 January 2019

Test piling

- Test piles will allow us to validate our design and construction methodology
- 3 locations - A412 (Water-ski Club), Harvil Road and possibly Moorhall Road
- Three types of piles
 - Large diameter bored piles (approx. 1.2m and 60-70m deep)
 - Continuous Flight Auger (CFA) piles (approx. 0.6-0.9m and 25m deep)
 - Vibrated/driven tubular steel piles (approx. 0.9m and 30m deep)



The Works

- Works will be carried out in core working hours, with a generator running 24 hours for onsite welfare.
- Large concrete pours may require work to overrun, of which there are only a few. Permission has been sought to extend hours to 20:00 from Monday to Friday and 15:00 on Saturday for Hillingdon sites.
- Heras fencing (approx. month 1), then mix of fencing/hoarding
- The works run in two distinct phases.

Phase one – overview of works	Phase two – overview of works
<ul style="list-style-type: none">• Installation of temporary Heras fencing for security• Piling platform construction• Vegetation and tree clearance• GI• Drainage• Utility protection or diversion, as required	<ul style="list-style-type: none">• Grout curtain testing• Large diameter bored piles• CFA pile and tubular steel pile• Pile testing• Demobilisation & reinstatement

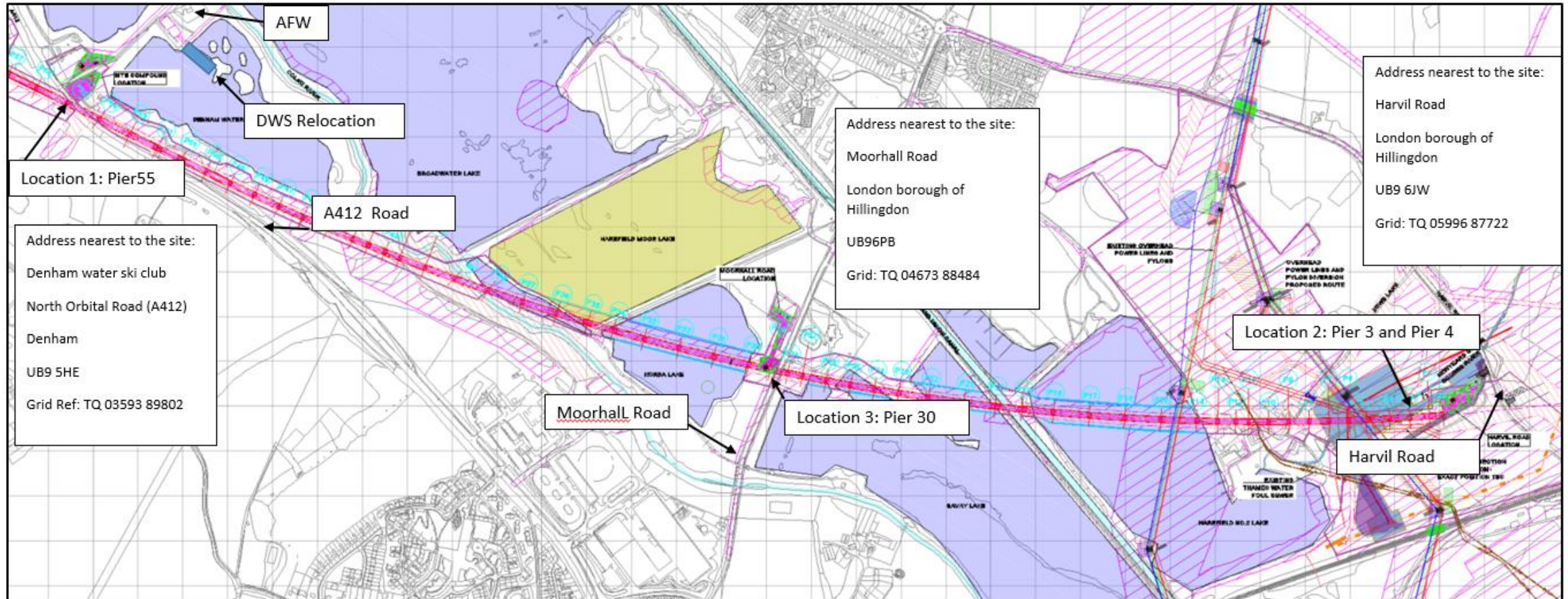


Preparatory work and permissions required

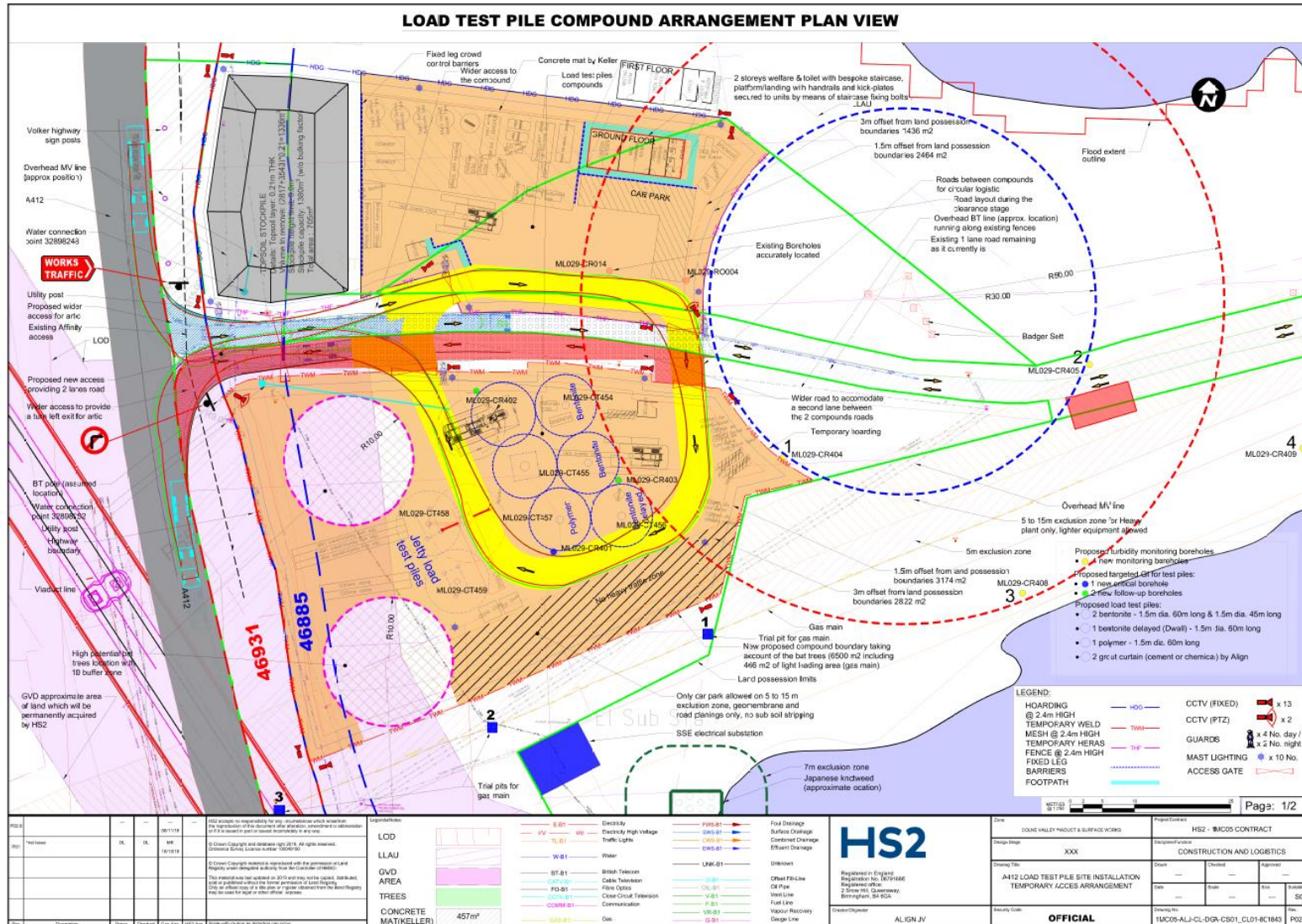
- Section 61 application
- Schedule 17 application for lorry movements
- Schedule 4 traffic consent
- Environmental consents
- Notification of works



The three locations



Location one – A412



Timescales

- Phase one runs from January 2019 to mid-March 2019
- Phase two runs from mid-March 2019 to approx. September 2019

Lorry movements

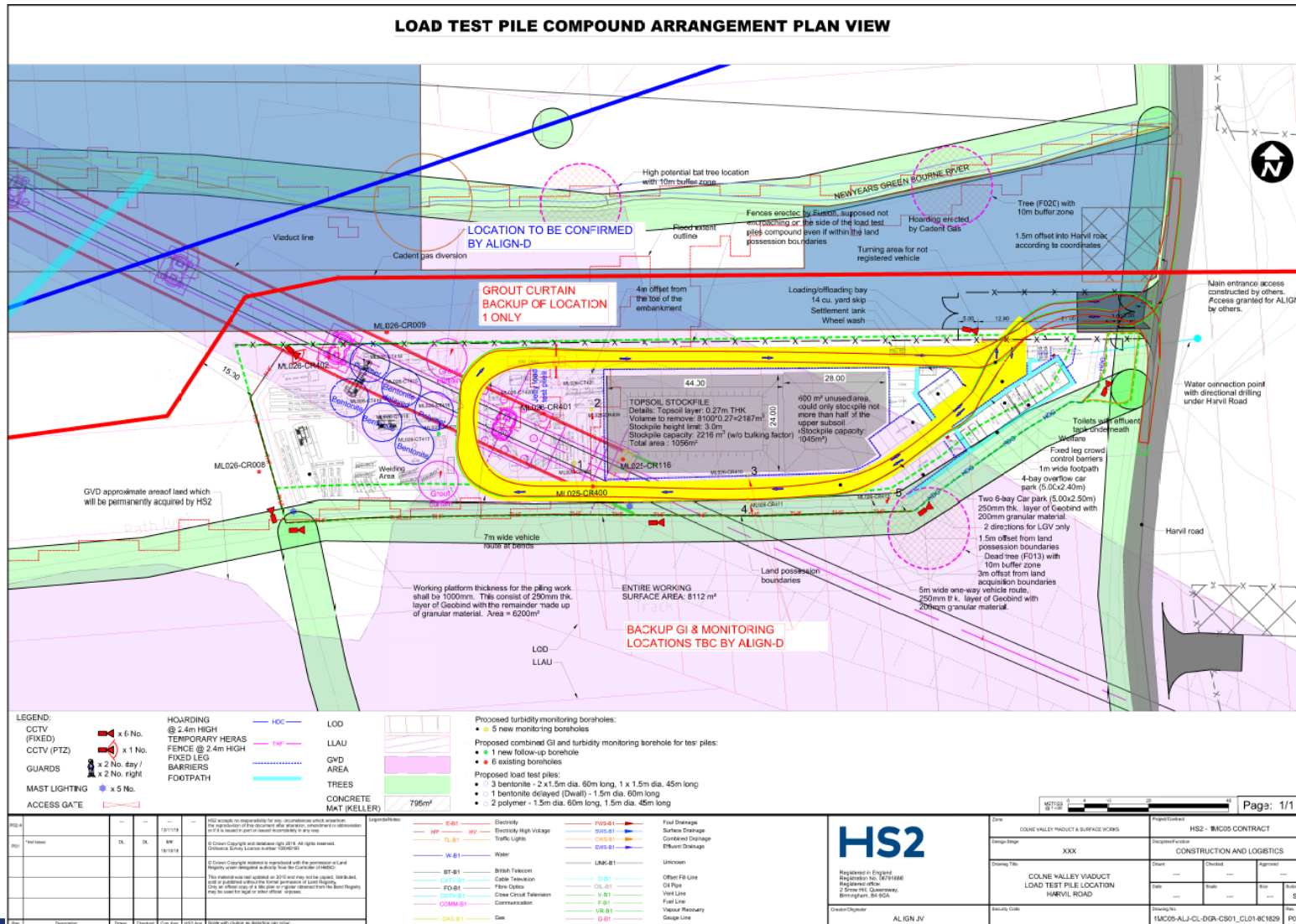
- Peak total movements of 122 (61 lorries) per day for approximately 13 days
- Southbound flow only from M25 J16 to ensure left turn

Daytime noise

- Baseline between 50dB and 55dB
- The highest monthly noise level at façade around 60dB
- These figures are based on highest anticipated daily noise level in the month

<p>HS2</p> <p>CONCRETE MAT(KELLER) 457m²</p>	<p>LEGEND:</p> <p>HOARDING @ 2.4m HIGH</p> <p>TEMPORARY WELD MESH @ 2.4m HIGH</p> <p>TEMPORARY HERAS FENCE @ 2.4m HIGH</p> <p>FIXED LEG BARRIERS</p> <p>FOOTPATH</p> <p>CCTV (FIXED) x 13</p> <p>CCTV (PTZ) x 2</p> <p>GUARDS x 4 No. day / x 2 No. night</p> <p>MAST LIGHTING x 10 No.</p> <p>ACCESS GATE</p>	<p>HS2</p> <p>REGISTERED IN ENGLAND</p> <p>REGISTERED NO. 1871666</p> <p>REGISTERED OFFICE: 2 ZENITH COURT, BIRMINGHAM, B4 6EA</p> <p>Project/Contract: HS2 - M25 CONTRACT</p> <p>CONSTRUCTION AND LOGISTICS</p> <p>OFFICIAL</p>
---	--	--

Location two – Harvil Road



Timescales

- Phase one planned to run from approx. February/March 2019 to April/May
- Phase two runs from April/May to Autumn

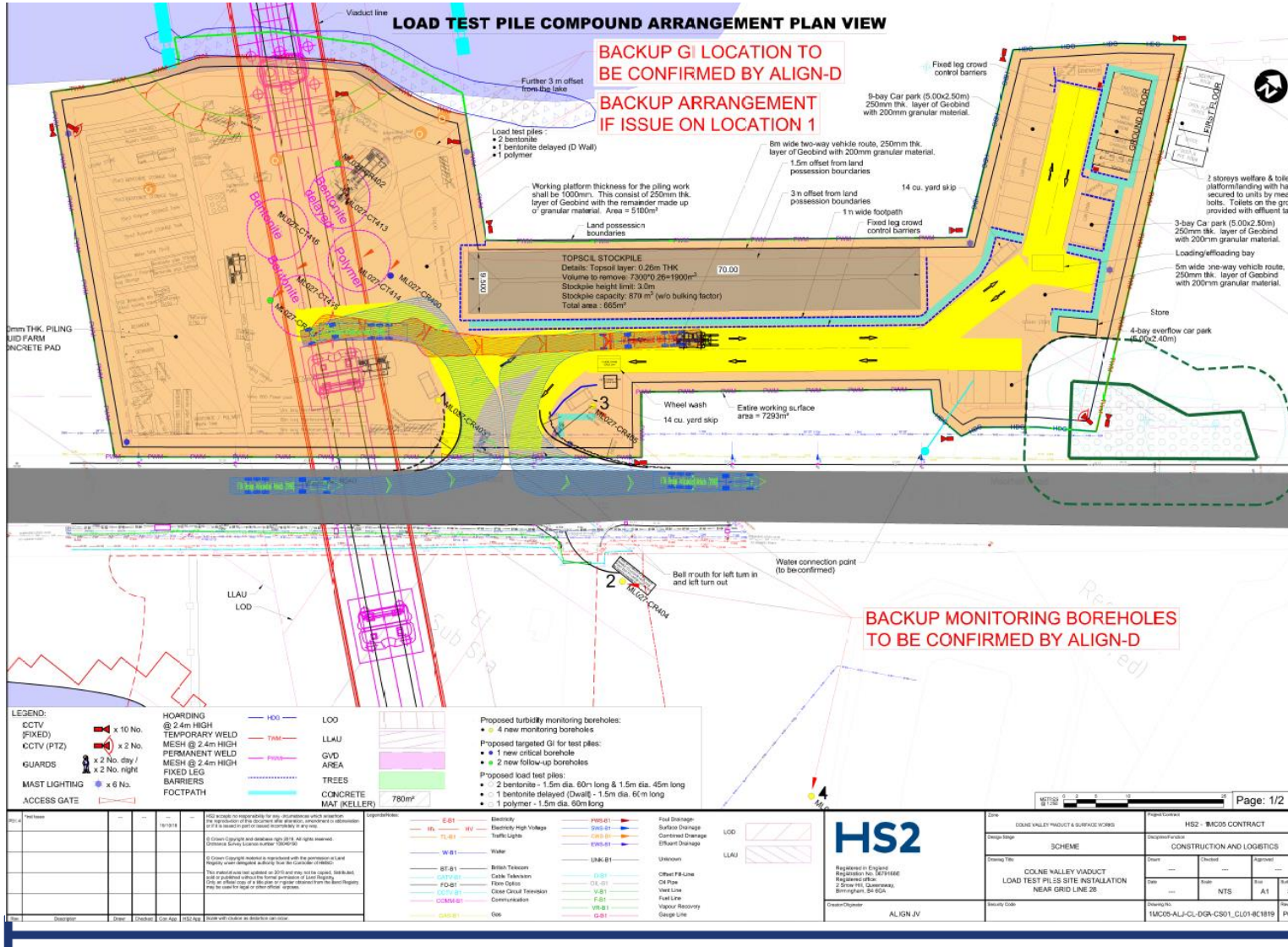
Lorry movements

- Peak movements of 172 (86 lorries) per day for approximately 10 days
- A40, Breakspear Road, Harvil Road, Moorhall Road, A412 – clockwise only to ensure left turn

Daytime noise

- Baseline between 52dB and 55dB
- The highest monthly noise level at facade is around 58dB to 63dB.
- These figures are based on highest anticipated daily noise level in the month

Location three - Moorhall Road, if required



Timescales

- This location will be used if required following the GI at location one

Lorry movements

- Peak movements of 130 (65 lorries) per day for approximately 10 days.
- A412, Moorhall Road, Harvil Road, Breakspear Road and A40, – anti clockwise only to ensure left turn

Daytime noise

- Baseline between 46dB and 58dB
- The highest monthly noise level at facade is around 54dB to 64dB
- These figures are based on highest anticipated daily noise level in the month

Thank you for listening

